



# SHANKS FOR FEMALE CAP ELECTRODES

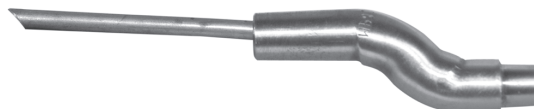
Phone: 888-654-9353 Fax: 937-253-2324 Production Engineering Sales Co.

CMW shanks are precision manufactured from CMW®3 class 2 material to provide a high quality mount for cap type electrodes. They are designed for high strength and electrical conductivity.

\*These shanks are shown with a blind water hole for cap replacement without shutting off water. Shanks with through water holes are available, by adding "TH" to the basic part number. Example: MP30212TH.

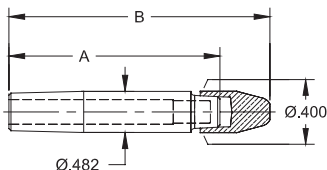
## SHANKS FOR FEMALE CAP ELECTRODES

- See pages 8 & 9 for CMW standard nose and GCAP® electrode caps



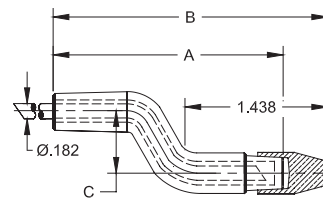
SHANKS FOR FEMALE CAPS WITH #4 RW TAPERS

Part No.	A	B
MP3012	1.25	1.75
MP3013	1.50	2.00
MP3014	1.75	2.25
MP3015	2.00	2.50
MP3016	2.25	2.75
MP3017	2.50	3.00
MP3018	2.75	3.25
MP3019	3.00	3.50
MP30112	3.25	3.75
MP30114	3.50	4.00
MP30116	3.75	4.25
MP30118	4.00	4.50

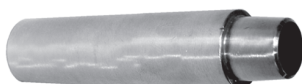


BENT OFFSET SHANKS FOR FEMALE CAPS WITH #4 RW TAPERS

Part No.	A	B	C
MP3019-08	2.62	3.28	0.50
MP3019-12	2.56	3.22	0.75
MP30112-12	2.81	3.47	0.75
MP30112-16	2.37	3.03	1.00
MP30116-16	2.87	3.53	1.00
MP30116-20	2.60	3.28	1.25

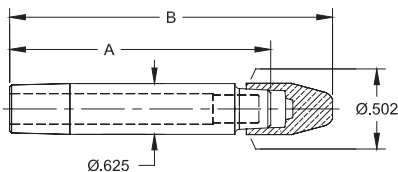


Bent Dimensions for Reference Only



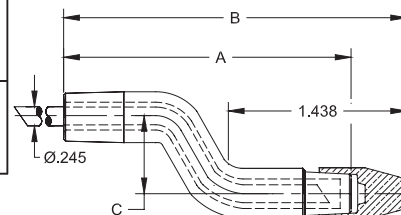
SHANKS FOR FEMALE CAPS WITH #5 RW TAPERS

Part No.	A	B
MP3023	1.46	2.00
MP3024	1.71	2.25
MP3025	1.96	2.50
MP3026	2.21	2.75
MP3027	2.46	3.00
MP3028	2.71	3.25
MP3029	2.96	3.50
MP30212	3.21	3.75
MP30214	3.46	4.00
MP30216	3.71	4.25
MP30218	3.96	4.50
MP30220	4.21	4.75
MP30222	4.46	5.00

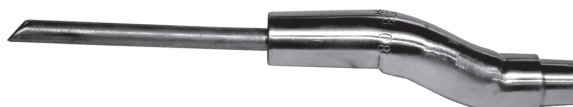
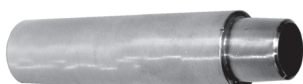


BENT OFFSET SHANKS FOR FEMALE CAPS WITH #5 RW TAPERS

Part No.	A	B	C
MP3029-08	2.58	3.20	0.50
MP3029-12	2.60	3.12	0.75
MP30212-12	2.77	3.44	0.75
MP30212-16	2.33	3.00	1.00
MP30214-12	3.00	3.66	0.75
MP30214-16	2.81	3.48	1.00
MP30216-16	2.83	3.49	1.00
MP30216-20	2.77	3.43	1.25

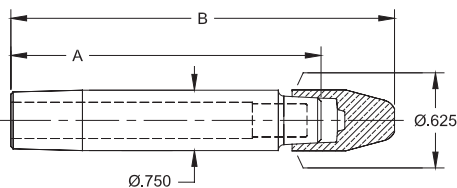


Bent Dimensions for Reference Only



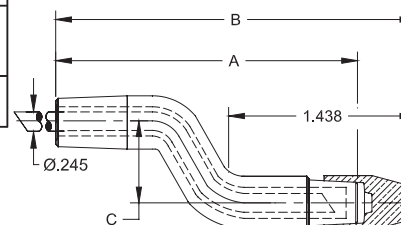
SHANKS FOR FEMALE CAPS WITH #6 RW TAPERS

Part No.	A	B
MP3044	1.64	2.25
MP3045	1.89	2.50
MP3046	2.14	2.75
MP3047	2.39	3.00
MP3048	2.64	3.25
MP3049	2.89	3.50
MP30412	3.14	3.75
MP30414	3.39	4.00
MP30416	3.64	4.25
MP30418	3.89	4.50
MP30420	4.14	4.75
MP30422	4.39	5.00



BENT OFFSET SHANKS FOR FEMALE CAPS WITH #6 RW TAPERS

Part No.	A	B	C
MP3049-08	2.69	3.30	0.50
MP30412-12	2.81	3.42	0.75
MP30414-12	2.94	3.55	0.75
MP30416-16	3.06	3.67	1.00
MP30420-20	3.25	3.86	1.25



Bent Dimensions for Reference Only

# SHANKS FOR MALE CAP ELECTRODES

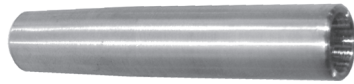


Phone: 888-654-9353 Fax: 937-253-2324 Production Engineering Sales Co.

CMW shanks are precision manufactured from CMW®3 class 2 material to provide a high quality mount for cap type electrodes. They are designed for high strength and electrical conductivity.

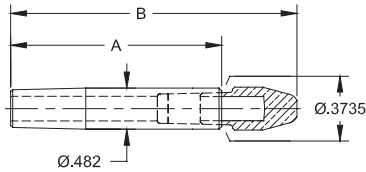
## SHANKS FOR MALE CAP ELECTRODES

- See pages 8 & 9 for CMW standard nose and GCAP® electrode caps



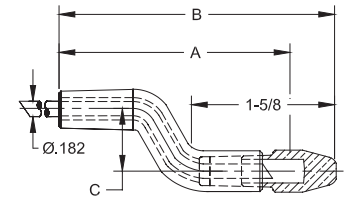
SHANKS FOR MALE CAPS WITH #4 RW TAPERS

Part No.	A	B
3012	1.25	1.88
3013	1.50	2.12
3014	1.75	2.38
3015	2.00	2.62
3016	2.25	2.88
3017	2.50	3.12
3018	2.75	3.38
3019	3.00	3.62
30112	3.25	3.88
30114	3.50	4.12
30116	3.75	4.38
30118	4.00	4.62

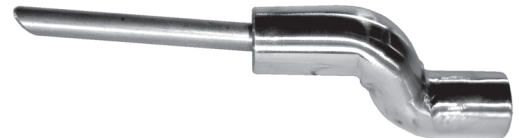


BENT OFFSET SHANKS FOR MALE CAPS WITH #4 RW TAPERS

Part No.	A	B	C
3019-08	2.62	3.37	0.50
3019-12	2.56	3.31	0.75
30112-12	2.81	3.56	0.75
30112-16	2.37	3.12	1.00
30116-16	2.87	3.62	1.00
30116-20	2.62	3.37	1.25

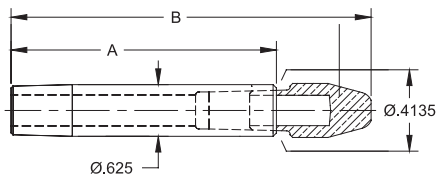


Bent Dimensions for Reference Only



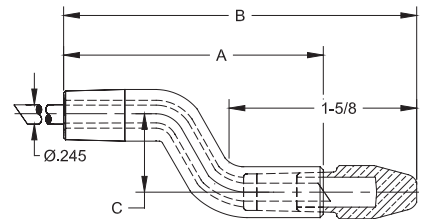
SHANKS FOR MALE CAPS WITH #5 RW TAPERS

Part No.	A	B
3022	1.25	2.00
3023	1.50	2.25
3024	1.75	2.50
3025	2.00	2.75
3026	2.25	3.00
3027	2.50	3.25
3028	2.75	3.50
3029	3.00	3.75
30212	3.25	4.00
30214	3.50	4.25
30216	3.75	4.50
30218	4.00	4.75
30220	4.25	5.00
30222	4.50	5.25

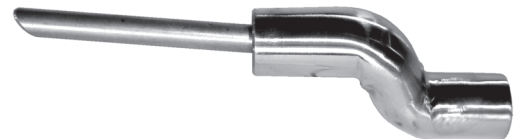
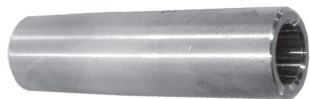


BENT OFFSET SHANKS FOR MALE CAPS WITH #5 RW TAPERS

Part No.	A	B	C
3028-08	2.37	3.12	0.50
3028-12	2.31	3.06	0.75
30212-12	2.81	3.56	0.75
30212-16	2.37	3.12	1.00
30214-12	3.06	3.81	0.75
30214-16	2.62	3.37	1.00
30214-20	2.37	3.12	1.25
30216-16	2.87	3.62	1.00
30216-20	2.62	3.37	1.25

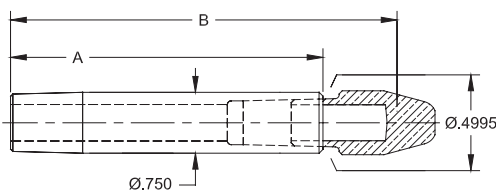


Bent Dimensions for Reference Only



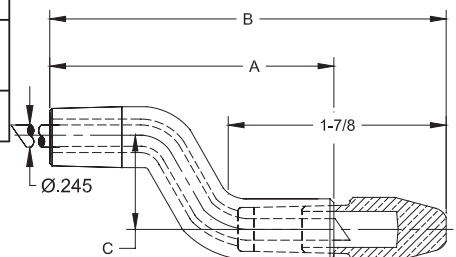
SHANKS FOR MALE CAPS WITH #6 RW TAPERS

Part No.	A	B
3043	1.50	2.62
3044	1.75	2.88
3045	2.00	3.12
3046	2.25	3.38
3047	2.50	3.62
3048	2.75	3.88
3049	3.00	4.12
30412	3.25	4.38
30414	3.50	4.62
30416	3.75	4.88
30418	4.00	5.12
30420	4.25	5.38
30422	4.50	5.62



BENT OFFSET SHANKS FOR MALE CAPS WITH #6 RW TAPERS

Part No.	A	B	C
30412-08	2.62	3.75	0.50
30412-12	2.56	3.69	0.75
30414-12	2.75	3.88	0.75
30416-16	2.87	4.00	1.00
30420-20	3.12	4.25	1.25



Bent Dimensions for Reference Only