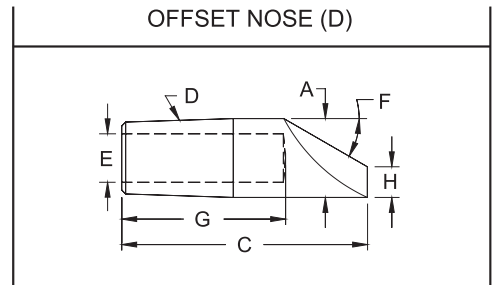
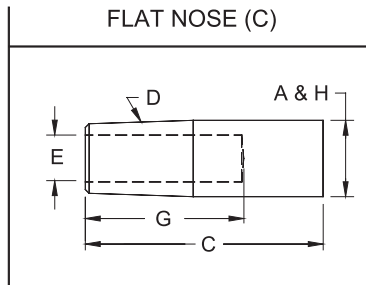


STRAIGHT ELECTRODES



4 RW TAPER (D)			
CMW [®] 28	CMW [®] 3	CMW [®] 100	Face Dia. H
Class 1	Class 2	Class 3	
1311	3311	5311	.482
1312	3312	5312	
1313	3313	5313	
1314	3314	5314	
1315	3315	5315	
1316	3316	5316	
1317	3317	5317	
1318	3318	5318	
1319	3319	5319	
13112	33112	53112	
13114	33114	53114	
13116	33116	53116	
13118	33118	53118	

COMMON DIMENSIONS			
Major Dia. A	Water Hole Dia. E	Overall Length C	Hole Depth G
.482	9/32	1	5/8
		1-1/4	3/4
		1-1/2	1
		1-3/4	1-1/4
		2	1-1/2
		2-1/4	1-3/4
		2-1/2	2
		2-3/4	2-1/4
		3	2-1/2
		3-1/4	2-3/4
		3-1/2	3
		3-3/4	3-1/4
4	3-1/2		

4 RW TAPER (D)				
CMW [®] 28	CMW [®] 3	CMW [®] 100	Nose Angle F	Face Dia. H
Class 1	Class 2	Class 3		
1411	3411	5411	45°	3/16
1412	3412	5412	40°	
1413	3413	5413	30°	
1414	3414	5414	30°	
1415	3415	5415		
1416	3416	5416		
1417	3417	5417	30°	
1418	3418	5418		
1419	3419	5419		
14112	34112	54112	30°	
14114	34114	54114		
14116	34116	54116		
14118	34118	54118		

5 RW TAPER (D)			
CMW [®] 28	CMW [®] 3	CMW [®] 100	Face Dia. H
Class 1	Class 2	Class 3	
1322	3322	5322	5/8
1323	3323	5323	
1324	3324	5324	
1325	3325	5325	
1326	3326	5326	
1327	3327	5327	
1328	3328	5328	
1329	3329	5329	
13212	33212	53212	
13214	33214	53214	
13216	33216	53216	
13218	33218	53218	
13220	33220	53220	
13222	33222	53222	

COMMON DIMENSIONS			
Major Dia. A	Water Hole Dia. E	Overall Length C	Hole Depth G
.625	3/8	1-1/4	3/4
		1-1/2	3/4
		1-3/4	1
		2	1-1/4
		2-1/4	1-1/2
		2-1/2	1-3/4
		2-3/4	2
		3	2-1/4
		3-1/4	2-1/2
		3-1/2	2-3/4
		3-3/4	3
		4	3-1/4
4-1/4	3-1/2		
4-1/2	3-3/4		

5 RW TAPER (D)				
CMW [®] 28	CMW [®] 3	CMW [®] 100	Nose Angle F	Face Dia. H
Class 1	Class 2	Class 3		
1422	3422	5422	40°	1/4
1423	3423	5423	40°	
1424	3424	5424	30°	
1425	3425	5425	30°	
1426	3426	5426		
1427	3427	5427		
1428	3428	5428	30°	
1429	3429	5429		
14212	34212	54212		
14214	34214	54214	30°	
14216	34216	54216		
14218	34218	54218		
14220	34220	54220		
14222	34222	54222		

*Electrodes of other tapers and alloys available upon request.