

CRANK ELECTRODES - COLD FORMED



Phone: 888-654-9353 Fax: 937-253-2324 Production Engineering Sales Co.

FEATURES AND SPECIFICATIONS

- Very strong bend electrodes for higher force applications

- Bent & Offset electrodes are for hard to reach locations

- Long lasting heavy duty electrodes

- Works with all industry standard holders

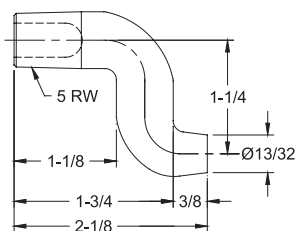
- Use with 4 & 5 R.W.M.A Holders

- Bent dimensions are for reference only

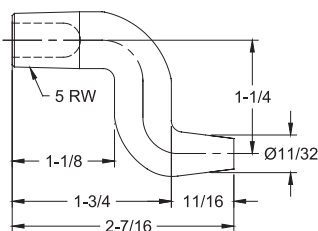
- Electrical conductivity up to 85% IACS for cold formed crank electrodes

- Rockwell hardness up to 83 HRB for cold formed crank electrodes

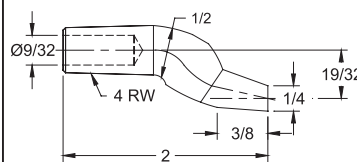
CRANK ELECTRODES - COLD FORMED



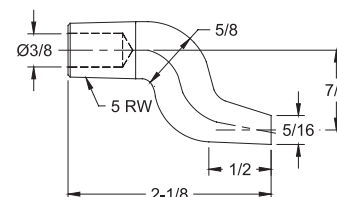
16-38661 CMW[®]3
COLD FORMED*



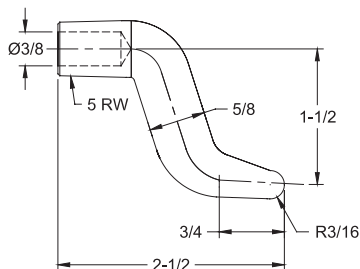
16-3866 CMW[®]3
COLD FORMED*



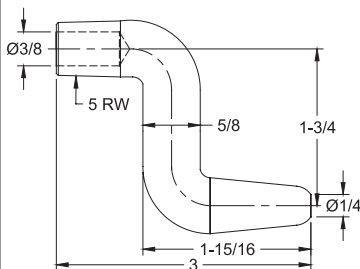
16-3870 CMW[®]3
COLD FORMED*



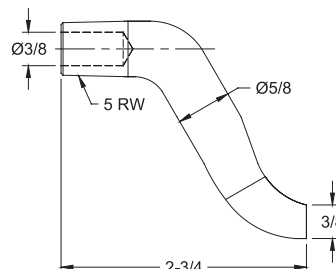
16-3871 CMW[®]3
COLD FORMED*



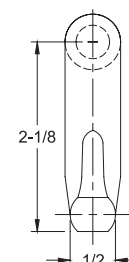
16-38351 CMW[®]3
COLD FORMED*



16-38352 CMW[®]3
COLD FORMED*



16-38353 CMW[®]3
COLD FORMED*



*Optional materials CMW[®]28 and CMW[®]100 available on special order



CRANK ELECTRODES - CASTINGS, FORGED

Phone: 888-654-9353 Fax: 937-253-2324 Production Engineering Sales Co.

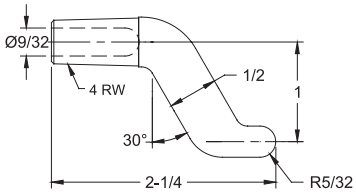
FEATURES AND SPECIFICATIONS

- Very strong bend electrodes for higher force applications
- Offset electrodes are for hard to reach locations
- Long lasting heavy duty electrodes

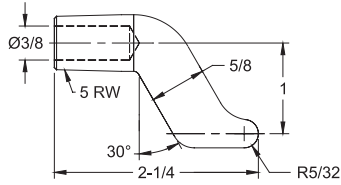
- Can be used in many job shop applications
- Works with all industry standard holders
- Use with 4 & 5 R.W.M.A Holders

- Electrical conductivity up to 80% IACS for castings & forged crank electrodes
- Rockwell hardness up to 70 HRB for castings & forged crank electrodes

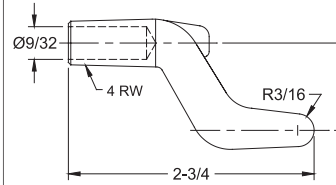
CRANK ELECTRODES - CASTING, FORGED



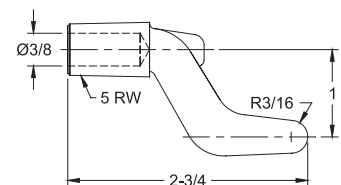
16-3835 CMW[®]3
CASTING



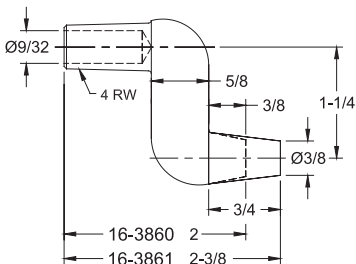
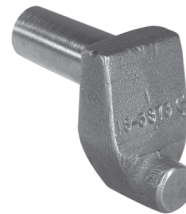
16-3836 CMW[®]3
CASTING



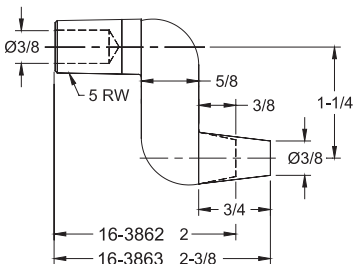
16-3837 CMW[®]3
CASTING



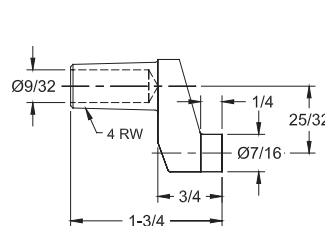
16-3838 CMW[®]3
CASTING



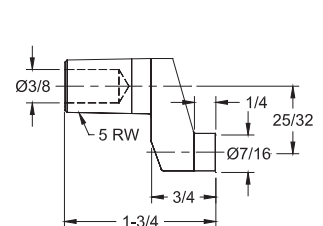
CMW[®]3
FORGED



CMW[®]3
FORGED



16-3873 CMW[®]3
CASTING



16-3874 CMW[®]3
CASTING