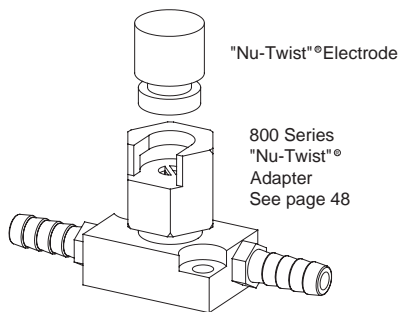




"NU-TWIST"[®] ELECTRODES



"Nu-Twist"[®] Electrode

800 Series "Nu-Twist"[®] Adapter See page 48

- No tapers or threads
- Can be extracted with a simple turn of hexagon locking nut
- Any contour in electrode face can be located or relocated in a given position
- Water circulated to end of electrode for maximum cooling
- Silver plated contact surfaces on electrode and base for maximum conductivity
- Provides a simple, low-cost electrode for most applications
- Electrodes shown can be modified with contours to provide faces required for most resistance welding applications

FLAT FACE "NU-TWIST" [®] ELECTRODE		TYPE 0 FLAT & 0 TRUNCATED "NU-TWIST" [®] ELECTRODE									
Size	Type	Electrode Part No.		Body Dia.	Weld Face Dia.	Overall Length	Adapter Clearance	Water Hole Dia.	Water Hole Depth	Electrode Seat Dia.	Elect. Ext. From Adapt.
		CMW [®] 3	CMW [®] 100	H	A	C	E	F	G	J	K
1	0 Flat	338750	538750	1/2	1/2	3/4	--	1/4	3/8	.625	1/2
		338030	538030	1/2	1/2	1-1/2	--	1/4	1-1/8	.625	1-1/4
1	0 Trunc.	378750	578750	1/2	1/4	3/4	--	1/4	3/8	.625	1/2
		378030	578030	1/2	1/4	1-1/2	--	1/4	1-1/8	.625	1-1/4
1	Flat	338751	538751	5/8	5/8	3/4	5/16	1/4	3/8	.625	1/2
		338031	538031	5/8	5/8	1-1/2	5/16	1/4	1-1/8	.625	1-1/4
2	Flat	338012	538012	1-1/4	1-1/4	1	5/8	1/2	1/2	1.125	1/2
		338052	538052	1-1/4	1-1/4	2	5/8	1/2	1-1/2	1.125	1-1/2
4	Flat	338014	538014	1-3/4	1-3/4	1	5/8	3/4	1/2	1.625	1/2
		338054	538054	1-3/4	1-3/4	2	5/8	3/4	1-1/2	1.625	1-1/2

Special face contours, lengths and diameters available on special order

THREADED SOCKET (OR BUTTON) ELECTRODES

(USE WITH 900 AND 950 SERIES HOLDERS ON PAGE 51)

ALL DIMENSIONS WITH AN (*) ARE COMMON TO EACH CAP IN A HORIZONTAL LINE.



FLAT FACE



TRUNCATED FACE



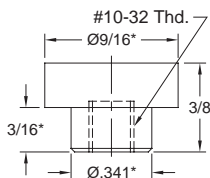
RADIUS FACE



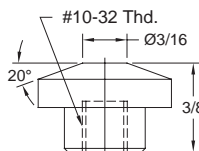
OFFSET FACE



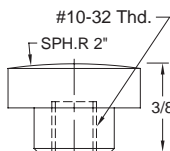
30° OFFSET FACE



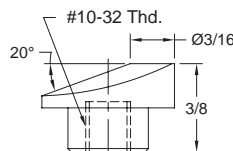
CMW[®]28 18-970
CMW[®]3 18-980
CMW[®]100 18-990



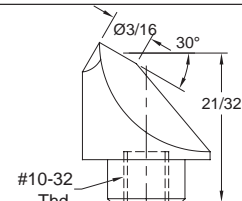
CMW[®]28 18-971
CMW[®]3 18-981
CMW[®]100 18-991



CMW[®]28 18-972
CMW[®]3 18-982
CMW[®]100 18-992



CMW[®]28 18-973
CMW[®]3 18-983
CMW[®]100 18-993



CMW[®]28 18-974
CMW[®]3 18-984
CMW[®]100 18-994

MALE THREADED BUTTON ELECTRODES

CMW shall supply a variety of nose configurations (examples shown below) made to your specifications. These electrodes are available in CMW[®]100, CMW[®]28 and CMW[®]3 materials to meet your various applications. Threads in both Unified (inch) or metric sizes can be supplied.

