

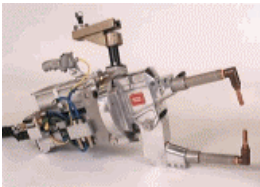


typical applications

projection welders



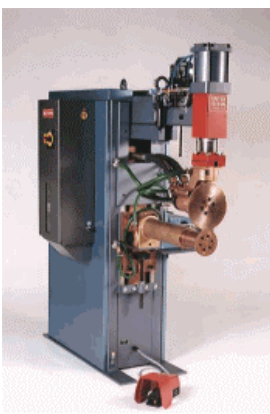
manual stations



robot stations

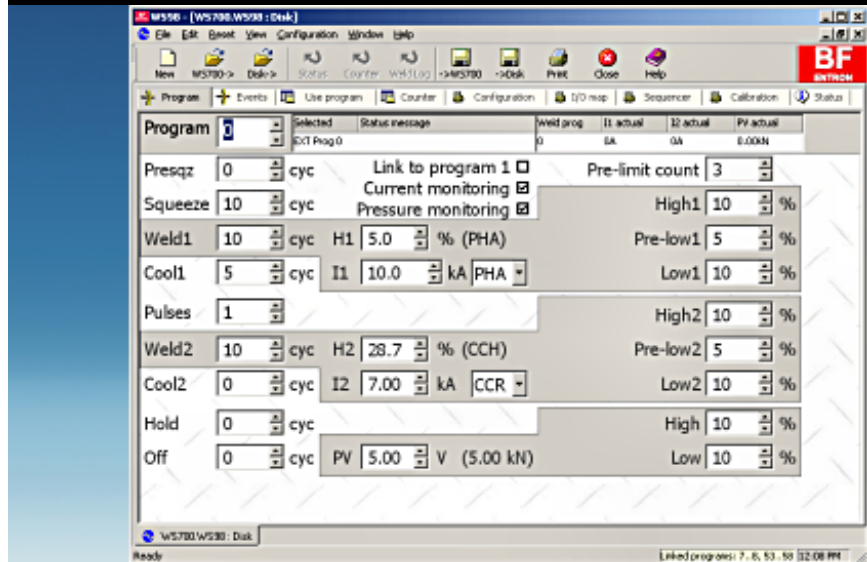


spot/seam welders



WS98-2003 PC software

data sheet



Take control of your welding data

Using all the features of Microsoft® Windows®, WS98-2003 allows you to program, monitor and archive the data in your WS700 welding control. Connection to the timer is via a fast but simple RS-232 link (cable supplied) or using the Optional Ethernet Port. The settings are displayed in tabbed windows, with each window showing only the parameters relevant to your application. For any number of WS2003s, WS98 is an essential partner.

features	benefits
easy to use	helps you get your work done
programming, configuration and status windows	parameters arranged in functional groups
intelligent displays	reduce on-screen clutter
enhanced tooltips	detailed explanation of all parameters
built-in printing and archiving	record and store all of your settings
multi-document interface	check the settings from several locations
context-sensitive HTML help	explains all features

options

none

configurations

none

WS98-2003 PC software

data sheet

program and limits display		calibration display	
status information	✓	status information	✗
selected program	✓	selected program	✗
results of the last weld	✓	results of the last weld	✗
sequence parameters	✓	CT, toroid and pressure calibration parameters	✓
monitoring parameters	✓	intelligent layout	✓
intelligent layout	✓	printing	✓
printing	✓	disk access	✓
disk access	✓	status/counter/log reset	✗
status/counter/log reset	✓	context-sensitive help	✓
context-sensitive help	✓	status display	
use program display		status information	✓
status information	✗	selected program	✓
selected program	✓	results of the last weld	✓
results of the last weld	✗	force output and force feedback	✓
intelligent layout	✓	counter status	✓
printing	✓	i/o status	✓
disk access	✓	printing	✓
status/counter/log reset	✗	disk access	✓
context-sensitive help	✓	status/counter/log reset	✓
counter display		context-sensitive help	✓
status information	✗	system requirements	
selected program	✗	PC with a 486DX or higher running Microsoft Windows 98, 2000, XP or NT4 build 1381:service pack #4. Microsoft Internet Explorer 3 is required for HTML help functions.	
results of the last weld	✗	5 MB of available hard-disk space	
intelligent layout	✓	800x600 16-bit colour display	
printing	✓	Microsoft mouse or compatible pointing device	
disk access	✓		
status/counter/log reset	✗		
context-sensitive help	✓		
configuration & printing display			
status information	✗		
selected program	✗		
results of the last weld	✗		
application-specific parameters	✓		
intelligent layout	✓		
printing	✓		
disk access	✓		
status/counter/log reset	✗		
context-sensitive help	✓		

All product names mentioned herein may be trademarks of their respective companies.
Information in the document is subject to change without notice.
91-10-00-00-14 rev. 3 © 2003 BF ENTRON LLC.

Distributed by:

PRODUCTION ENGINEERING

1344 Woodman Drive
Dayton, Ohio 45432

888-654-WELD (9353)
sales@productionengineering.com

www.resistanceweldsupplies.com