

ENTRON

INTRODUCING THE SINGLE PHASE AC CASCADE RESISTANCE WELDING CONTROL

EN6041

ENLINK 6041

Standard with every control



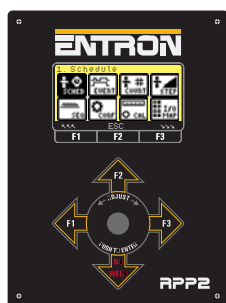
**USB and ETHERNET
INTERFACES**

USB FLASH MEMORY



For STORAGE and BACKUP of
SCHEDULE DATA and WELD LOG

**INTUITIVE OPERATOR
INTERFACE**



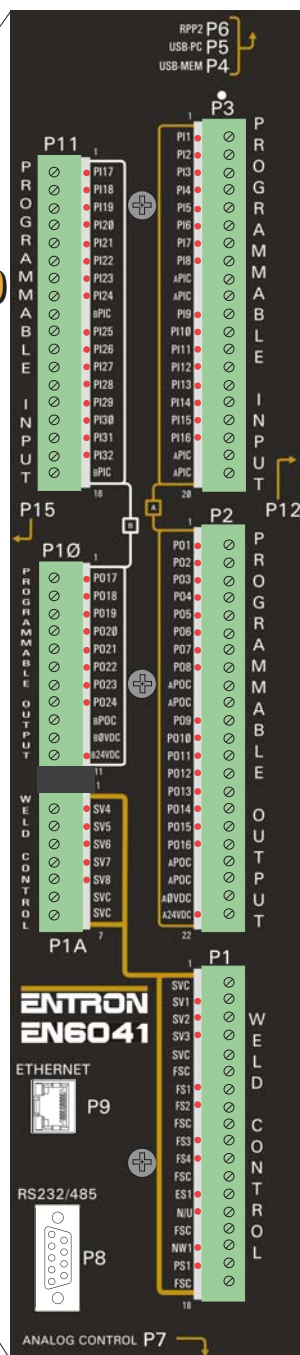
RPP2

128 x 64 Dots Graphic
Display with 8 lines of text
Joy Stick Data Entry
Simple Programming
Detachable/Hand Held

EN6041 is part of
the EN6000 Series family
(EN6001....EN6041)

The
EN6000
Series
is

**E
X
P
A
N
D
I
N
G**



FEATURES

- 100 Programs
- 2-8 Welding Contactors
- 300A, 1200A, 1800A, 2200A, 3200A and External Contactor firing
- Windows: Current High, Low and Pre limits
- Advanced Error Outputs
- Weld Log / Error Log
- Hardware status indicators
- Force control and force sensing
- Current and Force Stepper with Presets
- Event Outputs
- Integrated Sequencer with diverse instruction set
- Shorted contactor detection

I/O

- 8) inputs and 8) outputs dedicated to weld control
- 24 VDC flexible I/O (40 in/24 out); some mappable between weld functions, events, simple I/O sequences and remote PLC I/O; 32 inputs and 24 outputs available to sequencer
- 24V Outputs have current limited outputs with short circuit protection
- 2) each 4-20 mA or 0-10V Analog inputs and outputs for sequencer and force control

PLC Compatibility

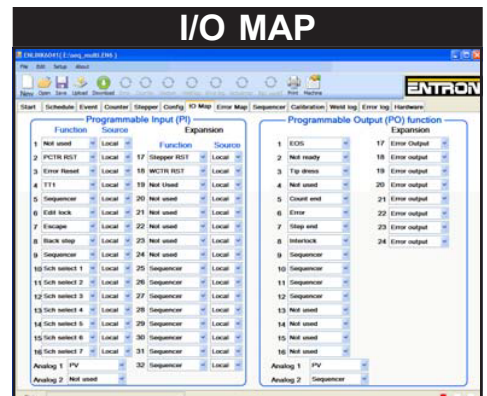
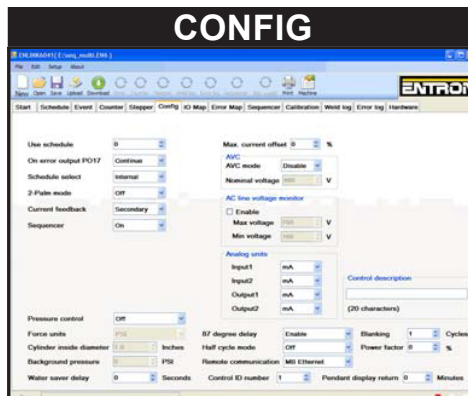
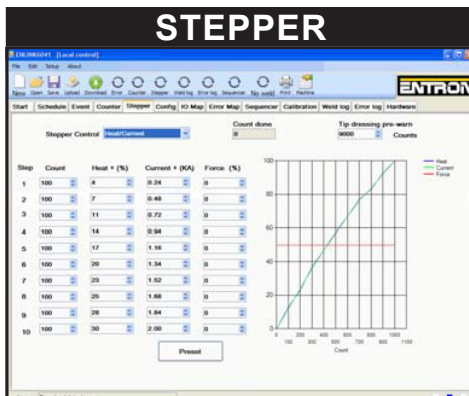
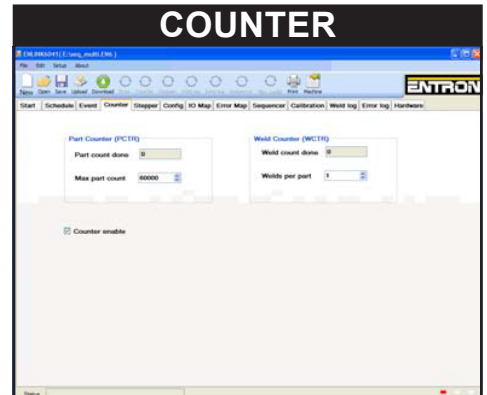
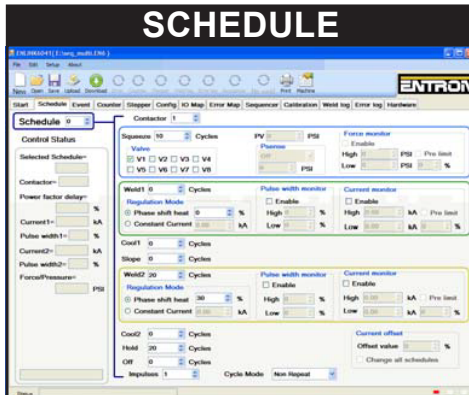
- PLC compatible via EtherNet/IP or MODBUS Function Code 04, 16 and 43 through low-cost serial (RS232 and RS485) or ethernet interfaces
- Use weld control I/O for remote PLC I/O
- Map weld control functions for PLC control
- Design custom operator interfaces
- Read and write Schedule and Control data
- Interface to other force systems
- Read weld logs remotely

**DESIGNED, BUILT,
SUPPORTED IN THE USA**

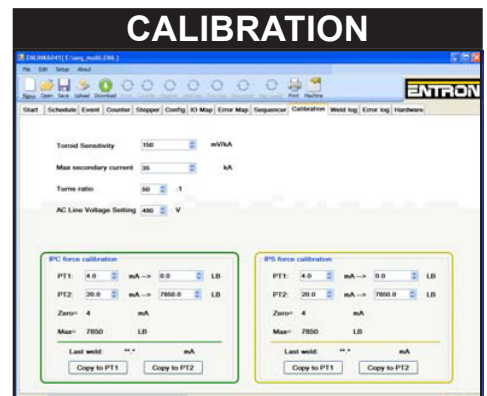
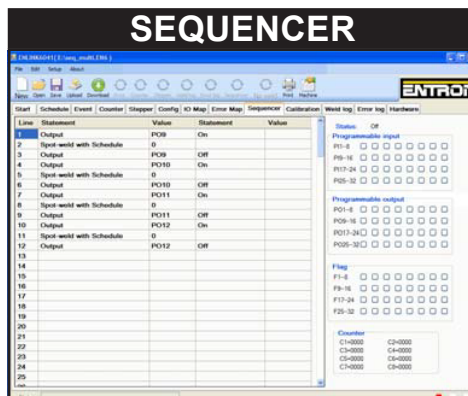
INTRODUCING ENLINK 6041

SINGLE USER (USB) and NETWORK (ETHERNET)
PROGRAMMING SOFTWARE

Standard with every control

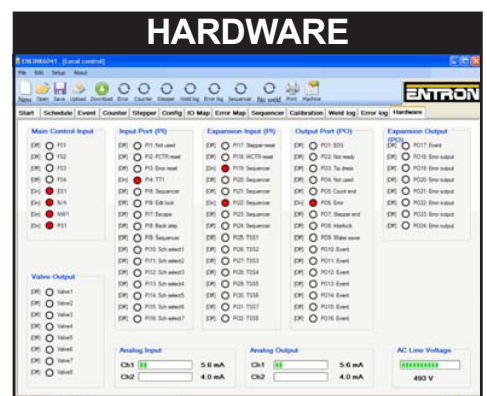


Error	Output port	Error	Output port
1 Schedule error	No output	2 Calibration error	No output
3 Event error	No output	4 Counter error	No output
7 Stepper error	No output	10 TC/Control error	No output
8 Stop error	No output	12 PPS error	No output
13 SPS error	No output	14 No stop error	No output
15 Phase error	No output	16 Watchdog error	No output
17 High force	No output	18 Low force	No output
19 High current 1	No output	20 Low current 1	No output
22 High current 2	No output	23 Low current 2	No output
25 TC/Line voltage	No output	26 Stepper error	No output
27 High pulse width 1	No output	28 Low pulse width 1	No output
29 High pulse width 2	No output	30 Low pulse width 2	No output
31 Tip down Pre-weld	No output	32 AWC error	No output
33 Power on with START released	No output	34 24VDC error	No output
36 PPS/Pressure No-weld	No output	38 No 24V for CPU I/O ports	No output
37 Safety relay error	No output	40 Resonant	No output
41 Resonant	No output	42 Resonant	No output
43 Resonant	No output	44 Resonant	No output
45 Resonant	No output	46 Resonant	No output
47 Resonant	No output	48 Resonant	No output
49 Resonant	No output	50 Low force error	No output



Record	Seq.	Counter	Force	Current1	Heat1	Current2	Heat2	Time	Date	Connector
3043	40	76	0	0	0	2.26	25	13.56.38	2/26/2013	1
3042	41	75	0	0	0	2.26	25	13.56.36	2/26/2013	1
3041	40	74	0	0	0	3.06	33	13.56.35	2/26/2013	1
3040	40	74	0	0	0	2.26	25	13.56.28	2/26/2013	1
3039	21	73	0	0	0	2.79	30	13.56.26	2/26/2013	1
3038	20	72	0	0	0	2.29	25	13.56.25	2/26/2013	1
3037	40	72	0	0	0	2.22	25	13.56.18	2/26/2013	1
3036	40	71	0	0	0	2.27	25	13.56.16	2/26/2013	1
3035	40	70	0	0	0	2.27	25	13.56.15	2/26/2013	1
3034	40	69	0	0	0	2.26	25	13.56.11	2/26/2013	1
3033	12	68	0	1.39	15	3.12	33	13.56.09	2/26/2013	4
3032	12	67	0	1.36	15	3.12	33	13.56.30	2/26/2013	4
3031	12	66	0	1.39	15	3.12	33	13.56.09	2/26/2013	4
3030	12	65	0	1.4	15	3.13	33	13.56.24	2/26/2013	4
3029	11	64	0	0	0	4.23	44	13.54.53	2/26/2013	3
3028	11	63	0	0	0	4.23	44	13.54.52	2/26/2013	3
3027	11	62	0	0	0	4.24	44	13.54.49	2/26/2013	3
3026	10	61	0	0	0	3.9	41	13.54.6	2/26/2013	2
3025	10	60	0	0	0	3.9	41	13.54.0	2/26/2013	2
3024	10	59	0	0	0	3.88	41	13.53.57	2/26/2013	2

Error	Description	Record	Counter	Error	Time	Date
21	High current 2	26	76	Low current 2	14.54.48	2/26/2013
22	Low current 2	27	77	High current 2	14.54.48	2/26/2013
		28	76	E-stop error	14.51.35	2/26/2013
		29	76	P11 MW error	14.1.20	2/26/2013
		24	76	P11 MW error	14.1.24	2/26/2013
		25	76	E-stop error	14.1.18	2/26/2013
		23	76	T11 Transformer error	14.1.13	2/26/2013
		22	68	P2MW (Pendant No-weld)	13.56.5	2/26/2013
		21	68	P2MW (Pendant No-weld)	13.56.22	2/26/2013



PRODUCTION ENGINEERING
1344 Woodman Drive
Dayton, Ohio 45432

888-654-WELD (9353)
sales@productionengineering.com

www.resistanceweldsupplies.com