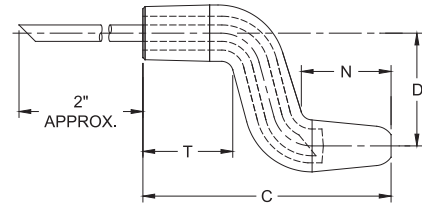


Offset D	Taper Size	Nose End N	Taper End T	Dome, Pointed & Flat, O.A.L. C	Pointed Nose Part No.
1/2	4 RW	3/4	7/8	2	321-0832-23
		3/4	7/8	2-1/2	321-0840-23
		2	7/8	3-1/4	321-0852-93
	5 RW	1	1	2-1/2	322-0840-44
		1	1	2-3/4	322-0844-44
		1	1	3-1/4	322-0852-44
3/4	4 RW	3/4	7/8	2	321-1232-23
		3/4	7/8	2-1/2	321-1240-23
		2	7/8	3-1/2	321-1256-93
	5 RW	1	1	2-3/4	322-1244-44
		1	1	3	322-1248-44
		2	1	3-1/2	322-1256-94
1	4 RW	3/4	7/8	2-1/4	321-1636-23
		3/4	7/8	2-3/4	321-1644-23
		1-3/4	7/8	3-1/4	321-1652-83
		3/4	7/8	3-1/2	321-1656-23
	5 RW	1	1	2-3/4	322-1644-44
		1	1	3	322-1648-44
		1	1	3-1/2	322-1656-44
		1-3/4	1	3-1/2	322-1656-84
	4 RW	3/4	7/8	2-1/2	321-2040-23
		3/4	7/8	3	321-2048-23
		1-1/2	7/8	3	321-2048-73
		1	1	2-3/4	322-2044-44
1-1/4	5 RW	1	1	3-1/4	322-2052-44
		1	1	3-1/2	322-2056-44
		1-1/2	1	3-1/2	322-2056-74
		1-3/4	1	3-1/2	322-2056-84
	4 RW	3/4	7/8	2-3/4	322-2444-44
		3/4	7/8	3	322-2448-64
		1-1/2	7/8	3	322-2448-73
		1	1	2-3/4	322-2448-64
1-1/2	5 RW	1	1	2-3/4	322-2444-44
		1-1/4	1	3	322-2448-64
1-3/4	5 RW	1	1	2-3/4	322-2844-44
		1-1/4	1	3	322-2848-64

DOUBLE BEND ELECTRODES

CMW double bend electrodes are cold formed from full hard straight electrodes, and have properties superior to those obtainable by casting or hot forging methods. Cooling tubes, unless otherwise specified are bent in place to provide coolant flow near the welding face as in the case of straight electrodes. These extra values assure you of longer electrode life, longer runs between dressings, and highest weld quality. RWMA CLASS 2 material is standard for these electrodes. RWMA CLASS 1 or CLASS 3, available on special order.

DOUBLE BEND POINTED NOSE

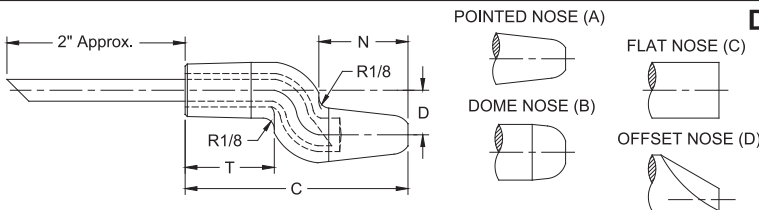


Bent dimensions are for reference only



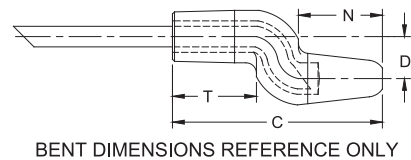
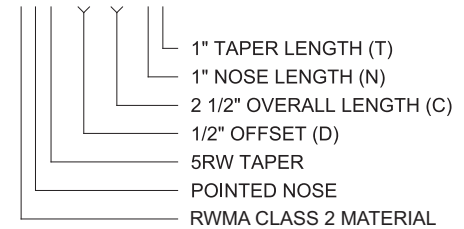
Water Tube Sizes:
4RW = .182 O.D.
5RW = .245 O.D.

DOUBLE BEND ELECTRODE CODING SYSTEM



EXAMPLE:

322-0840-44



BENT DIMENSIONS REFERENCE ONLY

Taper	Nose	Material	Offset (D)	Overall Length (C)	Nose Length (N)	Taper Length (T)	Optional Without Water Tube
X	X	X	X	X	X	X	Z
1 = CLASS 1	1 = DOME	1 = 4RW 1MT	08 = 1/2"	32 = 2"	2 = 3/4"		
3 = CLASS 2	2 = *POINTED	2 = 5RW 2MT	12 = 3/4"	36 = 2 1/4"	3 = 7/8"		
5 = CLASS 3	3 = FLAT		16 = 1"	40 = 2 1/2"	4 = 1"		
*Standard	4 = OFFSET		20 = 1 1/4"	44 = 2 3/4"	** 5 = 1 1/8"		
			24 = 1 1/2"	48 = 3"	** 6 = 1 1/4"		
			28 = 1 3/4"	52 = 3 1/4"	** 7 = 1 1/2"		
				56 = 3 1/2"	** 8 = 1 3/4"		
				60 = 3 3/4"	** 9 = 2"		

- See Page 6 for Metric Conversion
- See Page 7 for Taper Dimensions

Water Tube Sizes:
4RW = .182 O.D.
5RW = .245 O.D.

**May not be a stock item

Standard 4RW nose length = 3/4"

Standard 4RW taper length = 7/8"

Standard 5RW nose & taper length = 1"

CRANK ELECTRODES - COLD FORMED



Phone: 888-654-9353

Fax: 937-253-2324

Email: sales@productionengineering.com

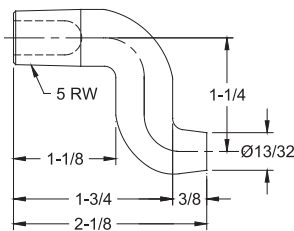
FEATURES AND SPECIFICATIONS

- Very strong bend electrodes for higher force applications
- Bent & Offset electrodes are for hard to reach locations
- Long lasting heavy duty electrodes

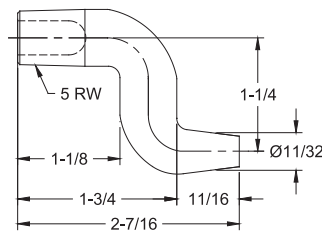
- Works with all industry standard holders
- Use with 4 & 5 R.W.M.A Holders
- Bent dimensions are for reference only

- Electrical conductivity up to 85% IACS for cold formed crank electrodes
- Rockwell hardness up to 83 HRB for cold formed crank electrodes

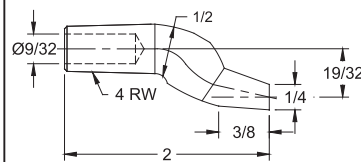
CRANK ELECTRODES - COLD FORMED



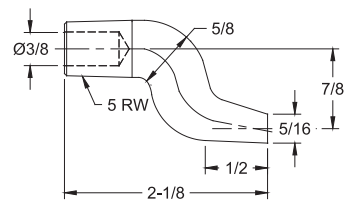
16-38661 RWMA CLASS 2
COLD FORMED*



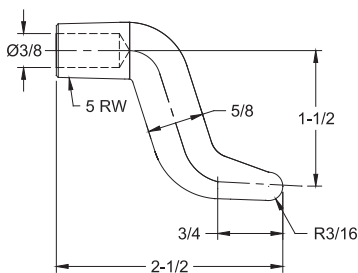
16-3866 RWMA CLASS 2
COLD FORMED*



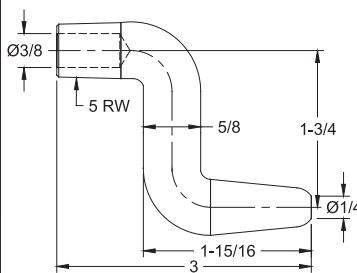
16-3870 RWMA CLASS 2
COLD FORMED*



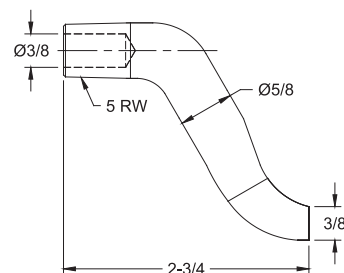
16-3871 RWMA CLASS 2
COLD FORMED*



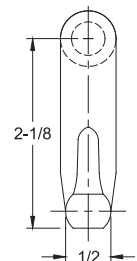
16-38351 RWMA CLASS 2
COLD FORMED*



16-38352 RWMA CLASS 2
COLD FORMED*



16-38353 RWMA CLASS 2
COLD FORMED*



*Optional materials RWMA CLASS 1 and CLASS 3 available on special order