

ENTRON™

Controls for Resistance Welding

WS700 Constant Current Controls

Single SCR

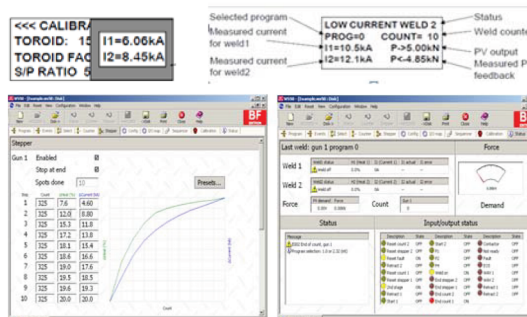


Control cabinet with door-mounted timer. Fitted into a sheet steel enclosure with circuit breaker, 24 VDC air valve power supply, appropriate line fusing, safety covers, and a direct water-cooled or air-cooled SCR power module and Primary CT for current regulation.

Features

- Welding modes: Single, Repeat & Half Cycle Spot, Roll Spot and Seam
- 64 weld programs
- Select programs internally or binary selection
- Large backlit 4-line, easy-to-use programming keypad
- Constant Current – Program weld current in kA
- Convenient Pop-up Meter for quick programming help
- Current Monitoring: High/Low limits and Pre-limit
- Fault output with selectable Head-lock function
- Weld History Log (keeps the last 64 welds)
- Proportional Valve Control I/O (0–10 V)
- Force Monitoring: High/Low limits in lbf and kN
- Wait for pressure function before weld
- Upslope and Downslope
- 16 inputs (24 VDC)
- 8 outputs + SCR pulse drive (24 VDC)
- End of Sequence output
- Retract (3 modes)
- Weld Counter
- Machine Logic Sequencer
- Programmable outputs
- RS232 port for printer or PC connection
- Optional PC Software for programming and calibration

WS98-700 PC Programming Software Stepper and Status screens shown



Exclusive ENTRON two year warranty