

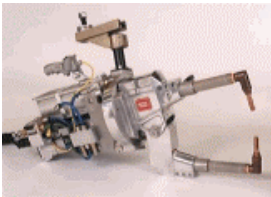


## typical applications

### automotive



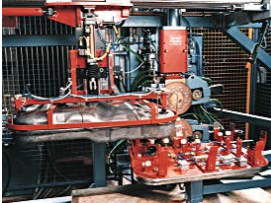
### manual stations



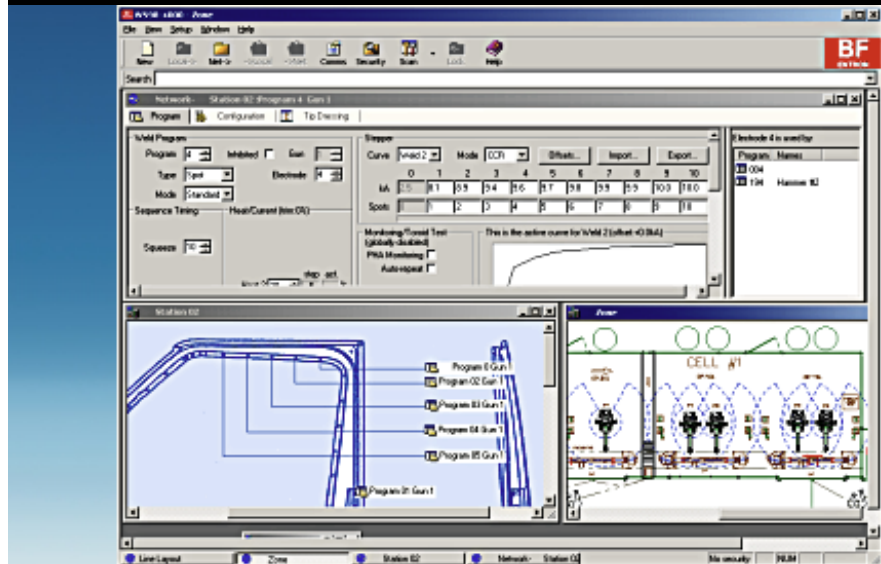
### robot stations



### multiwelders



## WS98-4000 PC software data sheet



## Take control of your welding data

Using all the features of Microsoft® Windows®, WS98-4000 allows you to program, monitor and archive the data in your WS4000 welding controls. Connection to the timers can be via simple RS-232 link or any one of a number of network interfaces. The interface is customizable to mimic your own application and enhanced security features make sure your system runs smoothly. For any number of WS4000s, WS98 is an essential partner.

features	benefits
easy to use	helps you get your work done
programming, configuration and status windows	parameters arranged in functional groups
customizable displays	organise your data how you want it
enhanced tooltips	detailed explanation of parameters
built-in printing and archiving	record and store all of your settings
multi-document interface	check the settings from several locations
context-sensitive help	explains all features

## options

none

## configurations

none

# WS98-4000 PC software

## data sheet

communications	stations
RS232	1
Profibus FMS	48
ControlNet	48 + 50
Ethernet	48
Interbus PCP	48

security	users
supervisors	5
superusers	20
users	100
workgroups	10
audit trails	
log files	

customizable interfaces	quantity
plant layout	1
zone layout	10
station layout	100
station names	100
program names	unlimited
multiple languages	3

archiving
network/station/names backup/restore
Microsoft Excel compatible

station features
programming
monitoring
status information
printing
backup/restore
names
security

network features
status scan
electrode scan
electrode areas
plant layout

### system requirements

PC with a 486DX or higher running Microsoft Windows 98, 2000, XP or NT4 build 1381:service pack #4. Microsoft Internet Explorer 3 is required for HTML help functions.

10 MB of available hard-disk space

1024 x 768 16-bit colour display

Microsoft mouse or compatible pointing device

All product names mentioned herein may be trademarks of their respective companies.  
Information in the document is subject to change without notice.

91-10-00-00-18 rev. 1 © 2003 BF ENTRON Ltd.

Distributed by:

### PRODUCTION ENGINEERING

1344 Woodman Drive  
Dayton, Ohio 45432

888-654-WELD (9353)  
sales@productionengineering.com

[www.resistanceweldsupplies.com](http://www.resistanceweldsupplies.com)