

# ENTRON

## Controls for Resistance Welding

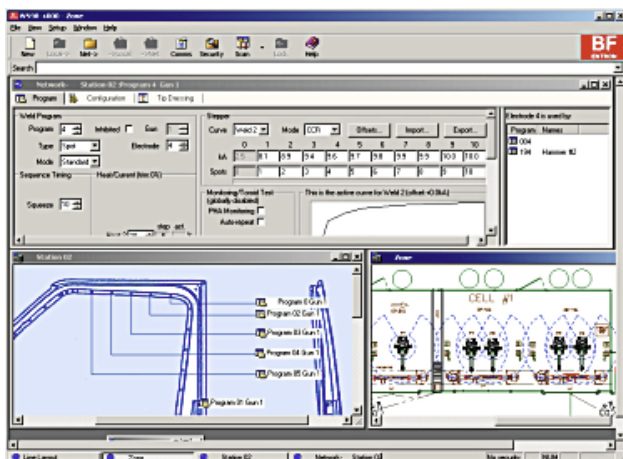
### WS4000 Series

### High-level Automation Controls



Steel enclosure with circuit breaker sized for the kVA rating. Available configurations with external programming pendant for gantry installations.

#### PC Programming/Monitoring Software WS98-4000 • WS98-4000S • WS98-4000A



#### Features

- Common processor platform for:
  - Dedicated Robot Installations
  - Hard Automation
  - Manual Welding Stations
- 192 weld programs
- 128 monitoring programs
- 24 electrode management programs
- Common software with multi-mode operation
- Independent control of one or two welding guns
- Three-interval welding sequence
- Constant Current or Phase Angle control modes
- Proportional Valve I/O standard (0–10 V or 4–20 mA)
- Extensive monitoring and diagnostics
- RS232
- Multiple fieldbus adapters – Profibus FMS; Interbus S; Profibus DP; DeviceNet; ControlNet; Ethernet; Interbus PCP
- Advanced Windows Software for programming and data logging
- Advanced security with password locks and Access Level Interface Customization

#### WS4000 Series Control Models

- WS4000S Advanced Seam Welding control with data recording functions
- WS4000A Aerospace Welding control with data recording functions as well as dual proportional regulation

*Exclusive ENTRON two year warranty*